

FY
2021

ANNUAL REPORT

LIVES DEPEND ON YOU

Counseling & Recovery
SERVICES OF OKLAHOMA



IMPACT

**7,285 ADULTS
SERVED IN FY21**

- 96% of clients are low/no income and receive care regardless of ability to pay
- 74% of clients discharged from hospital are not readmitted & improve with care - at an avg of \$2346/day psychiatric hospital stay this saved the state approximately \$243,984
- 214 clients enrolled in Suboxone program - 63% reduction in substance abuse in all clients 18 and over
- 64 mental health court clients diverted from jail (15 graduated)
- 95 clients were helped to obtain/maintain housing by helping with rent/deposits/utilities in the amount of \$36,364.17 (tripled year over year)
- 250 free Covid crisis counseling clients
- 31 clients in our transitional housing
- 29,802 prescriptions filled by our in-house pharmacy
- 4,485 transportation miles logged by our vehicles assisting clients' transit to/from appointments, and shuttling prescriptions from our pharmacy (down 70% due to Covid)
- Total Time (billed for) travel: 2,144hrs- #64,409 miles were traveled to service these community-based clients

IN OUR FISCAL YEAR 2021, WE PROVIDED THE FOLLOWING TOTAL NUMBER OF SERVICES:

Total Treatment Plans: 2,556
Total Assessments: 811
Total Case Management Services: 20,411
Total Medication Services (includes docs, injections, etc): 37,789
Total Individual/Family & Group Therapy Services: 10,828
Total Wellness Services: 1,362
Total IPS/Employment Services: 1,414 (14x more year over year)
- 329 client referrals, 29 clients starting jobs, and 141 employers engaged in the program
Total Recovery Support Services: 2,532 (4x last FY)
Total Tobacco Cessation Services: 631

BUILDING BETTER LIVES

and promoting personal dignity in our community through integrated wellness, behavioral health and substance abuse services - inclusive and accessible to all.



CALM Center

**602 CHILDREN
IN CRISIS
RECEIVED HELP
& INTERVENTION**

- 128 students served in our contracted school-based programs
- 92 students served in our Trojan Sanctuary school-based program

- 58% reduction in anxiety
- 54% reduction in depression
- .5% discharged to higher level of care after their stay

HOW CAN YOUR DONATIONS HELP?

- \$82 / hr - Case management
- \$97 / hr - Wraparound services
- \$127 / hr - Group therapy (up to 8 clients)
- \$138 / hr - Individual psychotherapy
- \$285/day - CALM Center stay per child per day
- \$30 / hr - Employment assistance
- \$113 - Supported transitional housing per person per day
- \$71 - Permanent supported housing per person per day estimate

Make a donation today: crsok.org/donate

FY
2021

BOARD MEMBERS

CHAIR
Steve Boyes
VICE CHAIR
Deneisha Johnson

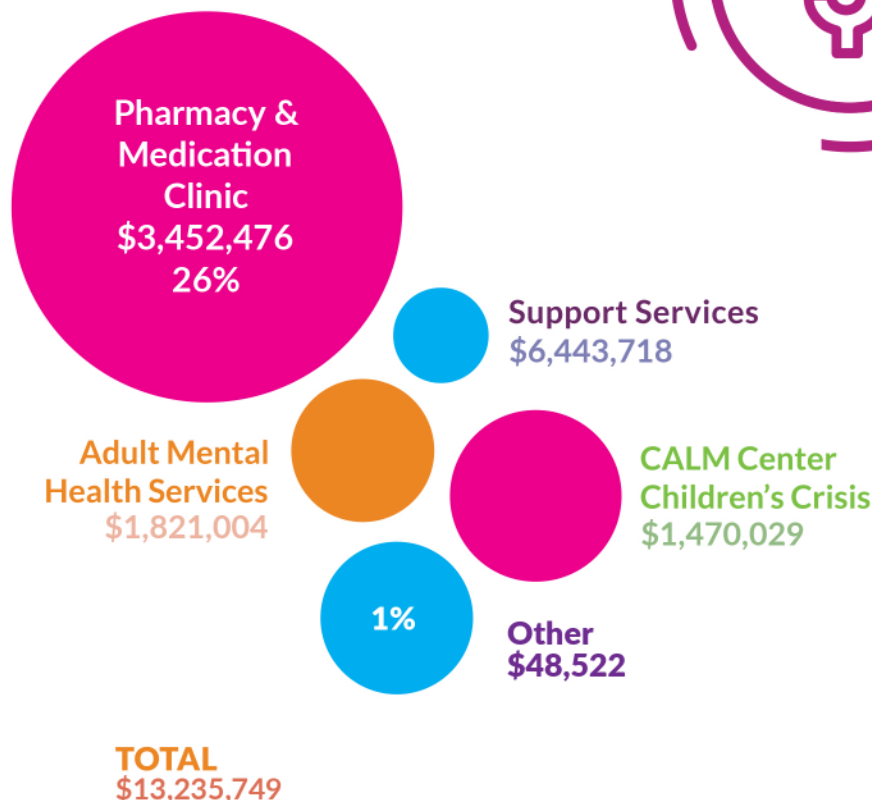
Aaron Armstrong
Rebecca Bennett
Suzanne Brodner
Jackie DuPont
Jason Prideaux
Robin Walters
Jonathan Wish

FINANCIAL SNAPSHOT

FY21 REVENUE

Public Contracts/Grants	\$6,606,168	45%
Medicare & Medicaid	\$1,642,393	11%
Pharmacy	\$2,341,932	16%
Donated Medications	\$1,031,675	7%
Commercial Insurance	\$20,430	1%
Program Fees	\$1,889,872	13%
PPC/Covid	\$1,057,300	7%
Other	\$106,840	1%
TOTAL	\$14,696,610	100%

FY21 EXPENSES



* includes Oklahoma Department of Mental Health and Substance Abuse Services